

# PIPE SUPPORT & ACCESSORY

09/21/2022

Spread Sheet Tab #: 6A

## Pipe Suspension Strap

for CPVC, Copper and PEX

Flat Style



Item #	Nominal Size	Bag	Master
1931	1/2"	100	2,000
1932	3/4"	100	1,000
1933	1"	100	1,000
1934	1-1/4"	50	500
1935	1-1/2"	20	500
1936	2"	10	200

## Galvanized Plumber Tape



Item #	Nominal Size	Bag	Master
9093	3/4 x 10' 28GA	5	50
9094	3/4 x 10' 22GA	5	50

## Pipe Suspension Hy-Ear Clamp

for CPVC, Copper and PEX

Mickey Style



Item #	Nominal Size	Bag	Master
1941	1/2"	100	2,000
1942	3/4"	100	1,000
1943	1"	100	1,000
1944	1-1/4"	50	600
1945	1-1/2"	20	600
1946	2"	10	200

## Copper Plated Plumber Tape

Perforated Strap



Item #	Nominal Size	Bag	Master
9087	3/4 x 10'	5	100

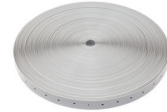
## Pipe Insulator Clamp

for CPVC, Copper and PEX



Item #	Nominal Size	Bag	Master
1951	1/2"	100	2,000
1952	3/4"	100	1,000

## ABS Hanger Strap



Item #	Nominal Size	Bag	Master
1953	3/4" x 100'	1	35

## Safety Nail Plate



Item #	Nominal Size	Master
9091	1-1/2 x 3"	200
9092	1-1/2 x 5"	200
9095	2 x 5"	100
9096	3 x 5"	100

## Half Clamp

Pre-Loaded Nail



Item #	Nominal Size	Bag	Master
1961	1/2" & 3/4"	50	5,000
1962	3/4"	30	3,000

## Plate Strap (Tie Plate)

12 GA. Galvanized



Item #	Nominal Size	Master
9081	1-1/2" x 9"	25
9082	1-1/2" x 12"	25
9083	1-1/2" x 18"	25

## Channel Spring Nut

Electro-galvanized  
Harden Treatment



Item #	Nominal Size	Bag	Master
6H228	3/8"	100	500
6H229	1/2"	100	500

### Long Eared Riser Clamp



Plain

Item #	Nominal Size	Master
6H106	2"	100
6H108	3"	50
6H109	4"	25
6H111	6"	15

### Felted Adjustable Hanger

Pre-Galvanized  
UL, FM listed



Item #	Nominal Size	Master
6H161	1/2"	100
6H162	3/4"	100
6H163	1"	100
6H164	1-1/4"	100
6H165	1-1/2"	100
6H166	2"	50
6H168	3"	50
6H169	4"	25

### Short Eared Riser Clamp



Plain

Item #	Nominal Size	Master
6H123	1"	100
6H124	1-1/4"	50
6H125	1 1/2"	50
6H126	2"	25
6H128	3"	20
6H129	4"	20

### Adjustable Ring Hanger

Pre-Galvanized  
UL, FM listed



Item #	Nominal Size	Master
6H021	1/2"	100
6H022	3/4"	100
6H023	1"	100
6H024	1-1/4"	100
6H025	1-1/2"	100
6H026	2"	100
6H028	3"	50
6H029	4"	25
6H031	6"	15

### Side Beam Clamp Connector

Fits 3/8" Threaded Rod



Item #	Nominal Size	Bag	Master
6H003	2 nail holes	10	200

### Clevis Hanger

Pre-Galvanized  
UL listed



Item #	Nominal Size	Master
6H146	2"	50
6H148	3"	25
6H149	4"	25
6H151	6"	10
6H152	8"	10

### Sammy Screw Wood

Fits 3/8" Threaded Rod



Item #	Nominal Size	Bag	Master
6H001	1/4" x 2" Bottom Load	100	500
6H002	1/4" x 2" Side Load	100	500

### J-Type Adj. Pipe Hanger

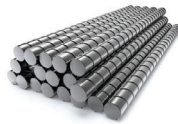
Pre-Galvanized



Item #	Nominal Size	Master
6H136	2"	25
6H138	3"	25
6H139	4"	50

### Cold Rolled Steel Rebar

#3 Size 3/8"



Item #	Nominal Size	Master
6H318	3/8" x 18" Length	50
6H324	3/8" x 24" Length	50
6H330	3/8" x 30" Length	50
6H336	3/8" x 36" Length	50

### Black Tie Wire

16 Gauge 3.5 lbs./roll



Item #	Nominal Size	Master
6H008	280ft.	20

### Hy-Co Bar Galvanized Steel

with Holes



Item #	Nominal Size	Master
6H004	5/8" x 18"	50
6H005	5/8" x 26"	50

### CPVC Replacement Coupling



Item #	Nominal Size	Master
2143	1"	100
2144	1-1/4"	250

### Threaded Rod

Zinc Plated / 10' Length



Item #	Nominal Size	Master
6H226	3/8" 16TPI	25
6H227	1/2" 13TPI	12

### Sliding Support Bracket (Sliding Hy-Co)

16 GA. Galvanized



Item #	Nominal Size	Length	Master
6H006	5/8"	10" - 18"	50
6H007	5/8"	13" - 24"	50

### Strut Channel Galvanized

14 GA. with Slot in 10' Length



Item #	Nominal Size	Master
6H221	1-5/8" x 1-5/8"	10
6H222	13/16" x 1-5/8"	10

### Rigid Strut Pipe Clamp

Zinc Plated  
For Sch. 40 Pipes



Item #	Nominal Size	Master
6H2008	1/2"	200
6H2009	3/4"	200
6H2010	1"	200
6H2011	1-1/4"	200
6H2012	1-1/2"	200
6H2013	2"	100
6H2014	2-1/2"	100
6H2015	3"	100
6H2017	4"	50

OD Size, Zinc Plated  
For Cast Iron Pipes



Item #	Nominal Size	Master
6H2013	2-3/8" OD	100
6H2048	3-3/8" OD	100
6H2056	4-3/8" OD	50

### Cushion Strut Clamp

Rubber Cushion for Copper Tubing



Item #	Nominal Size	Bag	Master
6H0041	1/2"		100
6H0042	3/4"		25
6H0043	1"		25
6H0044	1-1/4"		25
6H0045	1-1/2"		20
6H0046	2"		20

### Flat Cleanout Cover



Plastic in Chrome w/ Screw

Item #	Nominal Size	Master
6H0131	3" Pipe 4-1/2"	100
6H0141	4" Pipe 5-1/2"	50

### Flat Cleanout Cover



White Plastic w/ Screw

Item #	Nominal Size	Master
6H0132	3" Pipe 4-1/2"	100
6H0142	4" Pipe 5-1/2"	50

### Bell Cleanout Cover



Plastic in Chrome w/ Screw

Item #	Nominal Size	Master
6H0130	3" Pipe 4-1/2"	100
6H0140	4" Pipe 5-1/2"	50

### Bell Cleanout Cover



White Plastic w/ Screw

Item #	Nominal Size	Master
6H0133	3" Pipe 4-1/2"	100
6H0143	4" Pipe 5-1/2"	50

### Test Plug



Item #	Nominal Size	Bag	Master
6T015	1-1/2"	5	100
6T020	2"	5	100
6T030	3"	1	50
6T040	4"	1	50

### Galvanized Two Hole Pipe Strap



Electro-plated Galvanize

Item #	Nominal Size	Bag	Master
6H401	1/2"		100
6H402	3/4"		100
6H403	1"		100
6H404	1-1/4"		100
6H405	1-1/2"		100
6H406	2"		50
6H407	2-1/2"		50
6H408	3"		50
6H409	4"		50

### Hyco Coupling



C x C

Item #	Nominal Size	Bag	Master
9161	1/2"	50	500
9162	3/4"	25	250
9163	1"	25	250

### Copper Tube Strap



Two Holes

Item #	Nominal Size	Bag	Master
9051	1/2"	100	2,500
9052	3/4"	100	2,000
9053	1"	100	1,500
9054	1-1/4"	100	1,000
9055	1-1/2"	100	1,000
9056	2"	100	1,000
9157	2-1/2"	50	600
9158	3"	50	600

### Copper Plated Stud Bracket (HoldRite)



Item #	Nominal Size	Bag	Master
9085	1-1/4 x 20" 1/2" Hole	16	50
9086	1-3/4 x 20" 1/2" & 3/4" & 1" Hole	16	50

### Plastic DWV J Hook Hanger

For Sch. 30 & 40 Pipes  
50lbs Max.



Item #	Nominal Size	Bag	Master
6H0061	2" x 7"		
6H0062	3" x 7"		
6H0063	4" x 7"		

### Copper Plated Square Nail Plate



Item #	Nominal Size	Bag	Master
9050	1/2"	50	500

### All Purpose DWV Hanger

Galvanized 18 Gauge Steel  
Plastic Coated



Item #	Nominal Size	Master
6H102	2"	50
6H103	3"	50
6H104	4"	50

### Hex Nut

Electro-galvanized



Item #	Nominal Size	Bag	Master
6H502	3/8"	500	2,500

### Metal PEX Pipe Bend Support with Square

Compatible w/ 1/2" CTS Tubing



Item #	Nominal Size	Bag	Master
7B2728	1/2"	1	50

### Flat Washer

Electro-galvanized



Item #	Nominal Size	Bag	Master
6H503	3/8", 1"OD	500	3,000

### Plastic PEX Pipes Bend Support

For CTS Tube Size



Item #	Nominal Size	Bag	Master
7B2701	1/2"	1	200
7B2703	3/4"	1	100

### Drop-in Anchor

Electro-galvanized



Item #	Nominal Size	Bag	Master
6H504	3/8", 1-9/16"L	50	1,000

Bend Support w/ Nail Plate  
For CTS Tube Size



Item #	Nominal Size	Bag	Master
7B2702	1/2"	1	200

### Escutcheon Flange Cover

Chrome Plated Stainless Steel



Item #	Nominal Size	Bag	Master
6A1001	1/2" CTS	25	1,000
6A1002	3/4" CTS	25	1,000
6A1003	1" CTS	25	1,000
6A1004	1-1/4" OD Tubular	25	1,000
6A1005	1-1/2" OD Tubular	25	1,000
6A1021	1/2" IPS	25	1,000
6A1022	3/4" IPS	25	1,000
6A1023	1" IPS	25	1,000
6A1024	1-1/4" IPS	25	1,000
6A1025	1-1/2" IPS	25	1,000
6A1026	2" IPS	25	1,000
6A1035	1-1/2" IPS x 3-1/2" OD Oversize	25	1,000

Box Flange  
Chrome Plated



Item #	Nominal Size	Bag	Master
6A0324	1-1/4" IPS	5	200
6A0325	1-1/2" IPS	5	200
6A0304	1-1/4" OD Tubular	5	200
6A0305	1-1/2" OD Tubular	5	200

Split Floor & Ceiling Flange  
Chrome Plated Stainless Steel



Item #	Nominal Size	Bag	Master
6A0101	1/2" CTS	15	750
6A0102	3/4" CTS	15	750
6A0103	1" CTS	15	600
6A0121	1/2" IPS	15	750
6A0122	3/4" IPS	15	750
6A0125	1-1/2" IPS	15	600

Split Plastic Split Flange  
Chrome Plated



Item #	Nominal Size	Bag	Master
6A0501	1/2" CTS	15	1,500
6A0502	3/4" CTS	15	1,500

Split Plastic Split Flange  
White



Item #	Nominal Size	Bag	Master
6A0620	3/8" IPS (1/2" CTS)	15	1,500
6A0621	1/2" IPS (3/4" CTS)	15	1,500
6A0622	3/4" IPS	15	1,500
6A0623	1" IPS	15	1,500
6A0624	1-1/4" IPS	15	1,200
6A0625	1-1/2" IPS	15	1,200
6A0626	2" IPS	15	750