

Product Submittal

ABS DWV Fittings

Description:

The CFI ABS DWV fittings are for use in sanitary drain, waste, vent, sewer, and general drainage applications.

Specifications:

Acrylonitrile-butadiene-styrene (ABS) DWV fittings shall conform to cell class 3-2-2-2-2 as defined in ASTM 3965.
ABS DWV fittings shall conform to ASTM D2661.



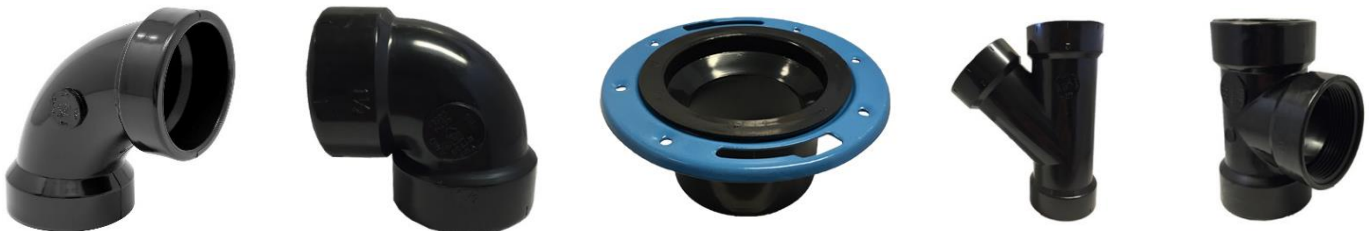
Installation:

Installation shall comply with the latest instructions applicable building codes. Solvent cement joints shall be made with a solvent cement conforming to ASTM D 2235. The system of installation shall be protected from chemical agents, fire-stopping materials, thread sealant, or other aggressive chemical agents not compatible with ABS compounds.

This system is intended for non-pressure applications where the operating temperature will not exceed 140°F. Hydrostatic testing of the system shall be completed prior to use.

Reference Standards:

ASTM 3965	Rigid acrylonitrile-butadiene-styrene (ABS) tube and fitting
ASTM D2661	ABS drain, waste and vent fittings
ASME F1498	Taper pipe threads for thermoplastic fittings or threads
CSA B181.1	ABS DWV pipe and pipe fittings
NSF 14	Plastic piping system and related materials



* CFI, may, from time to time, source and/or supplement ABS fittings product from suppliers anywhere in the world.